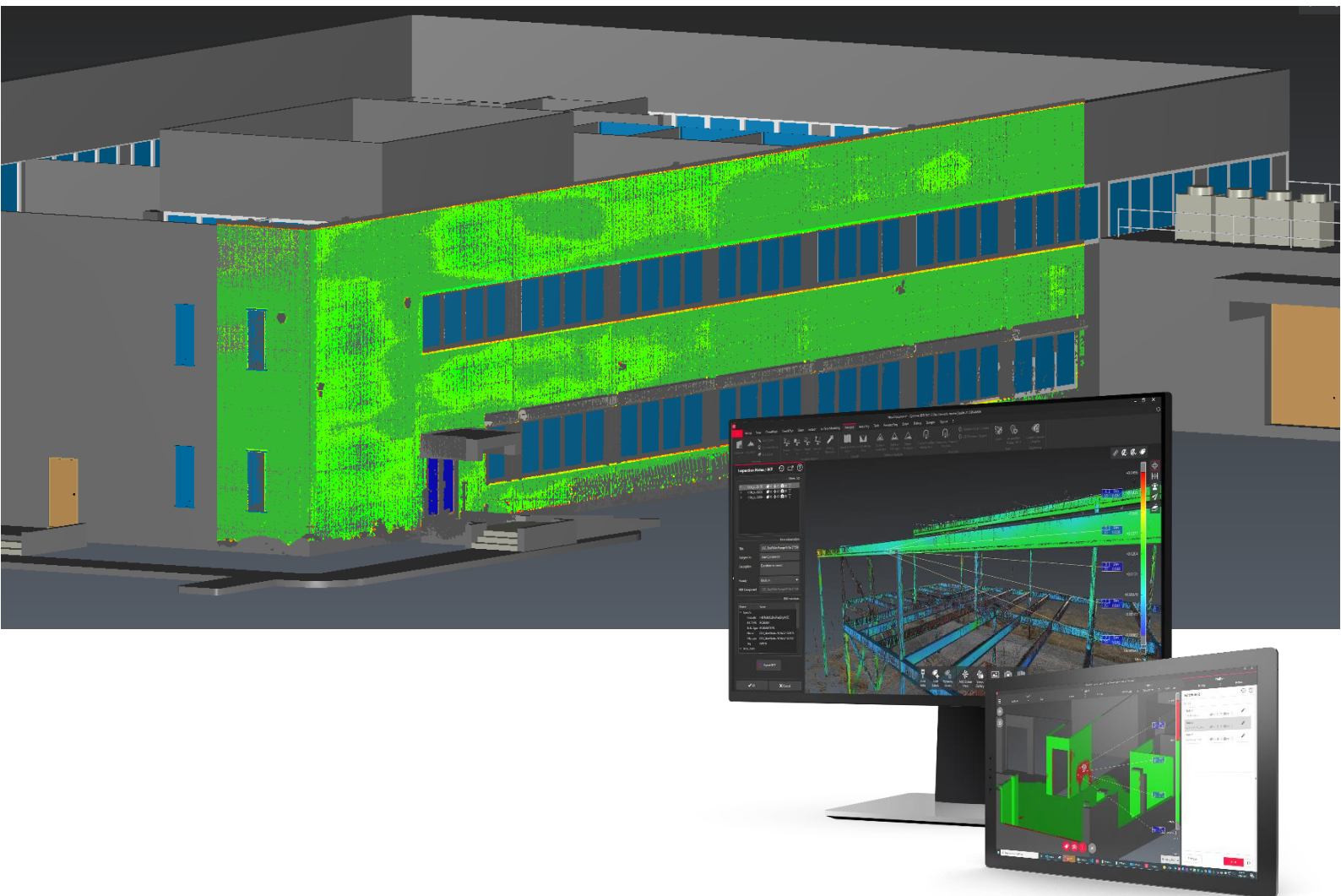


- when it has to be right



Leica Geosystems Release Notes

Product: Leica Cyclone 3DR 2022.1.4
Date: 4 November 2022
From: HDS Software Product Management



Contents

What's New	3
Bug Fixes.....	3
Generic specifications	3
Leica Cyclone 3DR 2022.1 Compatibility	3
Recommended Computer Specifications	4
Installation and Licensing Recommendations.....	4
Installation update Procedure	4
Licensing Setup.....	5
Licensing	9
Known Issues	9
Leica Cyclone 3DR supported file formats	10

What's New

This is a minor release including bug fixes for stability.

According to the maintenance expiration date policy, users under maintenance on 12 June 2022 may access version 2022.1.4 with no new license required.

Bug Fixes

- **Coord Sys > UCS > Floor + Wall / Wall + Wall:** When two colinear and irrelevant directions were picked by the user, there was no more issue to stop the process and warn the user. Fixed.
- **Extract > Best cylinder:** A wrong cylinder was extracted when the center and diameter parameters were defined by the user. Fixed.
- **File > Export DXF:** Repaired export of linear geometric objects.
- **File > Import ASCII:** The option "Name in first column" was not available anymore in the import step. Fixed.
- **File > Import DXF/DWG:** Annotations containing special symbols were not properly imported. Fixed.
- **File > Import IFCZIP:** Fixed the import process when some Unicode characters were embedded in the IFC file name.
- **File > Import PTS/PTX:** When intensity data were undefined or invalid, the file wasn't imported. Fixed.
- **Surface Modeling > Scan to Mesh:** Fixed a crash that may occur during the computation.

Generic specifications

Leica Cyclone 3DR 2022.1 Compatibility

Cyclone 3DR is compatible with CLM 2.5.0.0 and higher.

Cyclone 3DR is compatible with JetStream ENTERPRISE 1.3 and higher.

Cyclone 3DR is compatible with LGS files.

Cyclone 3DR is compatible with Cyclone ENTERPRISE 2022.0 and higher.

Cyclone 3DR is compatible with Cyclone REGISTER 360 2021.1 and higher.

Cyclone 3DR is compatible with Cyclone IMP databases from Cyclone 6.0 or higher, however improved rendering will only be seen with IMPs from Cyclone 9.3 or higher.

Recommended Computer Specifications

Regular workflows in desktop application:

CPU: 2 GHz Dual Quad Core i7 or higher (i5 minimum)

RAM: minimum 16 GB or more for 64-bit OS

Graphic Card: NVidia Quadro or GeForce 1 GB (with OpenGL support, versions 4.3 or higher)

Operating system: Microsoft Windows 7, 8, 10, 11 (64 bits supported)

Hard Disk: 3 GB free disk space

Tablet device for Touch Mode:

Microsoft Surface PRO Core i7 1.5 GHz – 16GB RAM.

Minimum specifications for Auto-classification (in addition to other recommended specifications for the desktop application):

RAM: minimum 32 GB

Graphic Card: NVidia with GPU capabilities

- [Compute capability](#): 3.7 or higher
- Minimum GPU memory: 4 GB

Hard Disk: 10 GB free disk space

CUDA® 11.2 Toolkit (from NVidia). **The 11.2 version of CUDA is mandatory for Auto-Classification.**

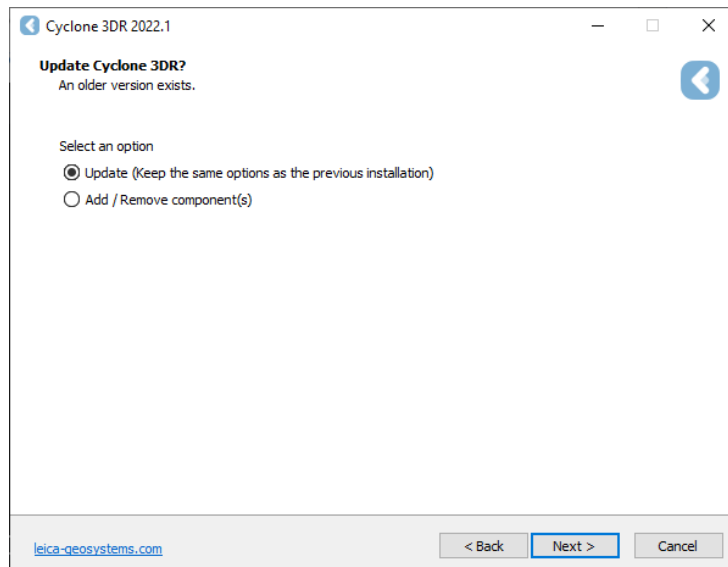
Installation and Licensing Recommendations

Installation update Procedure

1. Follow the directions in the Setup Wizard



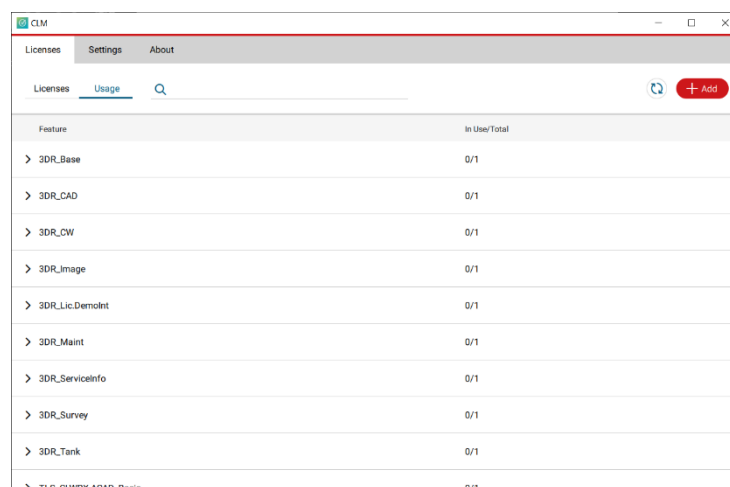
2. Select the option to update Cyclone 3DR (or repair if you want to change installing options)



3. Complete the installation by selecting "Finish".

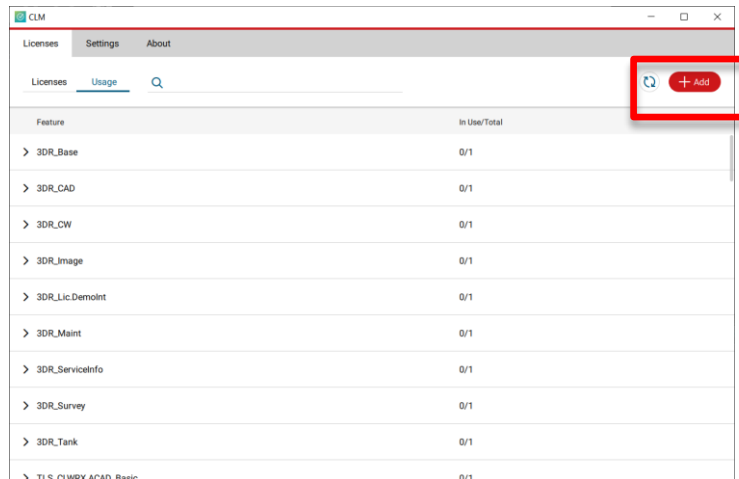
Licensing Setup

1. Once you have installed Cyclone 3DR, open the Client License Manager for **Floating** Licenses. The program is located here: **Start Menu | All Programs | Leica Geosystems | Client License Manager**

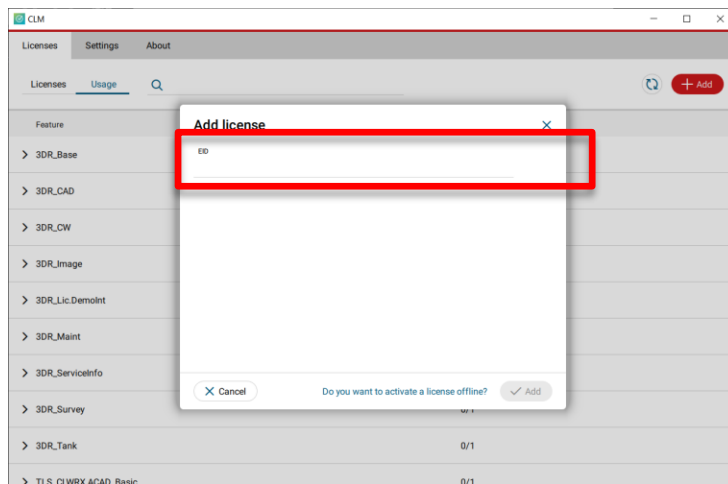


****NOTE* Be sure to choose the CLM Floating option (there are two CLM options and the Nodelocked CLM will not activate your license)***

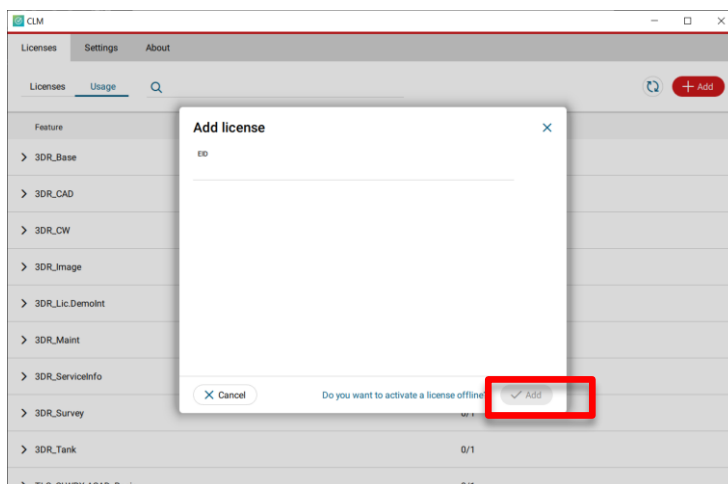
2. Choose the "Activate new licenses" option.



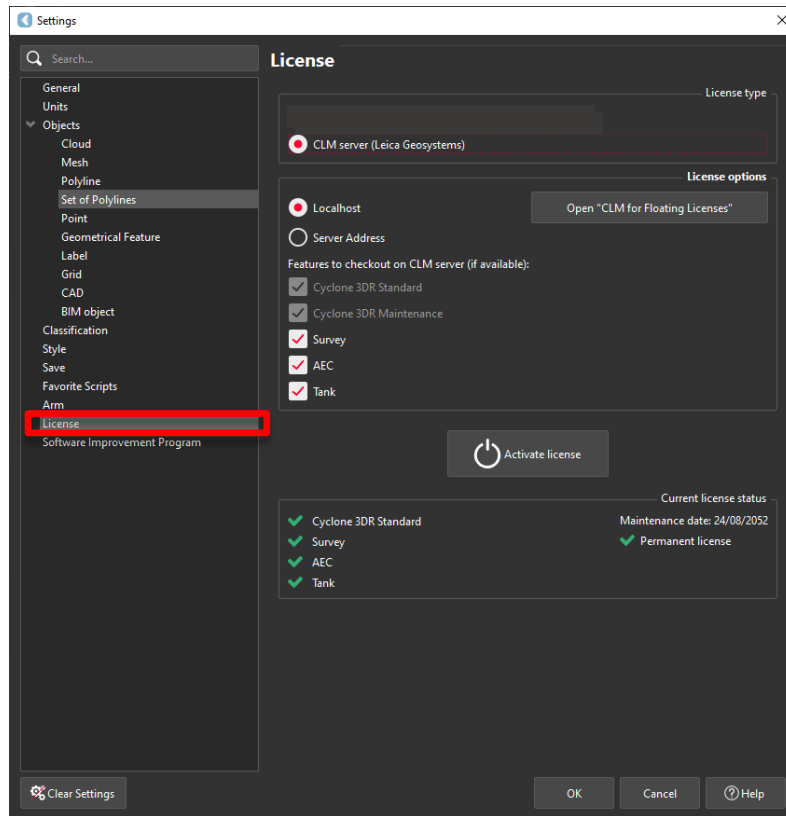
3. Enter your Entitlement ID (EID) in the field. To enter multiple EIDs separate them with a semicolon ";" and no space.



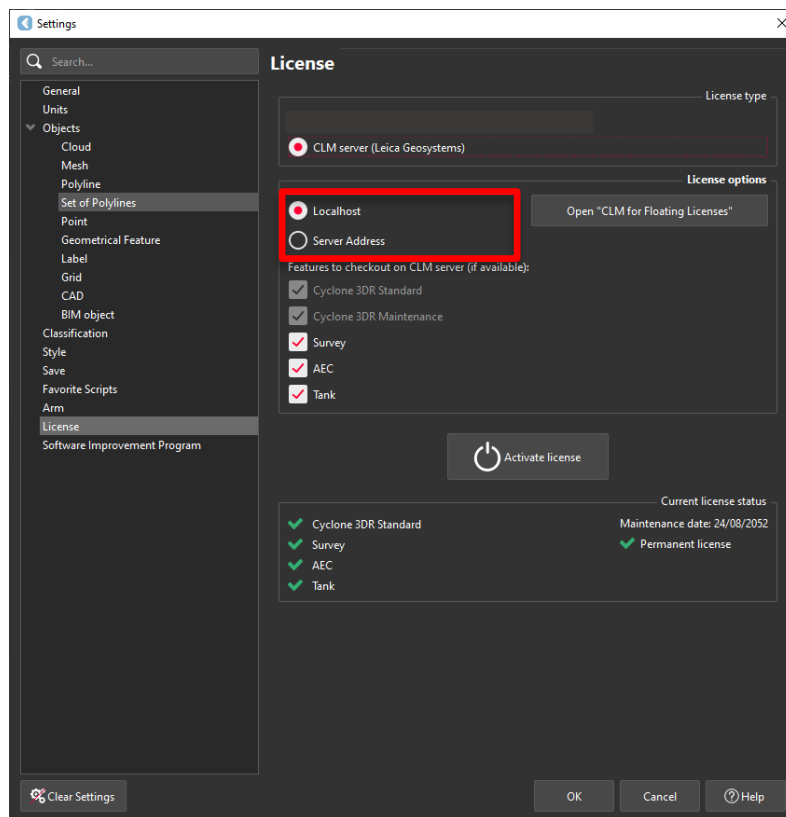
4. After you have entered your EID, choose the "Check for Activatable licenses" button in the bottom right of the page



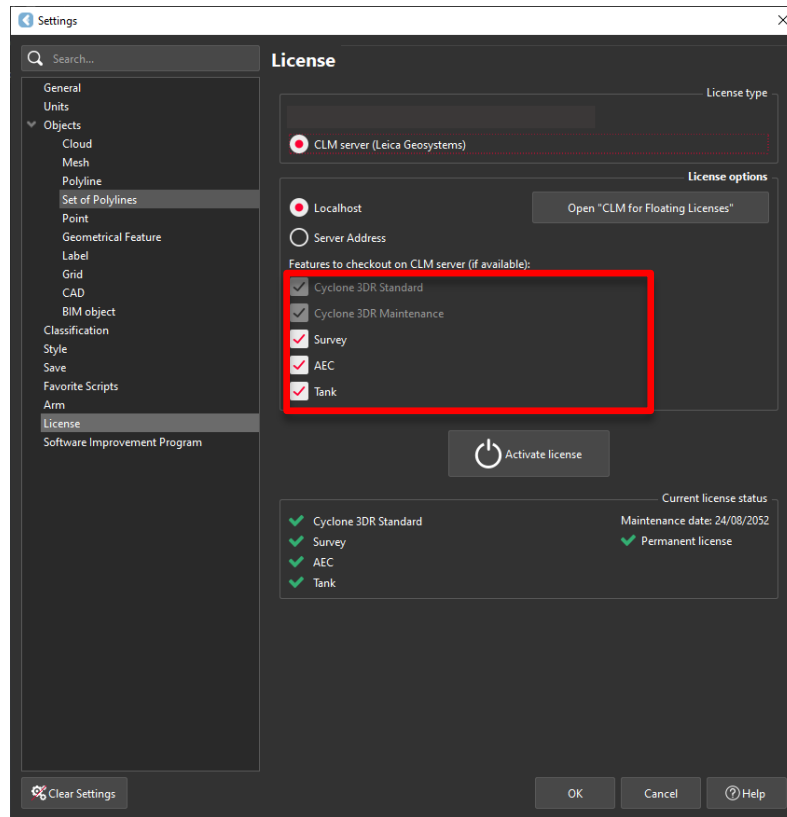
5. Once your licenses are activated you can launch Cyclone 3DR.
6. Go to Settings and select License.



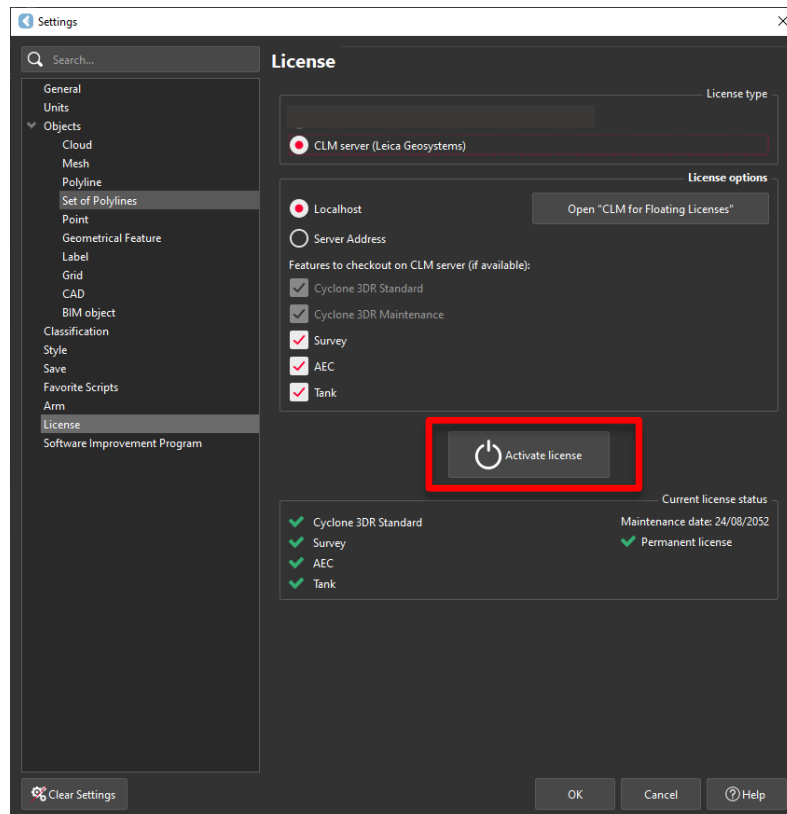
7. If you have entered the EID inside your local CLM, select **Localhost**. If the license is on a dedicated server, enter the server name in **Server Address**.



8. You can select the features you want to check out from CLM. The available options to checkout will correspond to the options you purchased which are contained in your EID.



9. Once the options are selected, click on **Activate license**.



Licensing

All users with valid CCP or CCP which was valid as of 12 June 2022 for Cyclone 3DR, can run this new version of Cyclone 3DR.

All users with valid CCP or CCP which was valid as of 12 June 2022 for 3DReshaper, can run this new version of Cyclone 3DR with no new license required.

Users with 3DReshaper licenses with expired CCP must migrate to Cyclone 3DR in order to continue to access updates and support. Please contact your sales or support personnel for more information.

Known Issues

- The Documentation Center is only available in English.
- Some CAD import and export issues might happen. For example, when exporting a cloud in DXF, some entities might be missing. To avoid this, it is preferable to use the Send to AutoCAD option.
- If DXF can be imported with a standard version, DWG requires the AEC or PRO Edition. One workaround is to use the 3DSend command from AutoCAD to Cyclone 3DR.
- .RSH files are natively compatible with Cyclone 3DR, and the last version of 3DReshaper is compatible with .3DR files (with a limit on textures and CAD objects).

Leica Cyclone 3DR supported file formats

Please reference the Cyclone 3DR Technical Specification for a complete list of supported file types per license.

	Import	Export
Point Cloud	Files ASCII (*.asc, *.csv, *.xyz, *.xyz...) Leica Geosystems (*.pts, *.ptx) and LGS (*.lgs) Leica Nova MS50/60 (*.sdb, *.xml) ShapeGrabber (*.3pi) 3DReshaper binary file (*.nsd) AutoDesk DXF (*.dxf) STL (*.stl) Polyworks (*.psl) Leica T-Scan + Steinbichler (*.ac) LIDAR data (*.las; laz) Other ASCII (*.*) Zoller and Fröhlich (*.zfs - *.zfc) PLY points without triangles (*.ply) ESRI ASCII (raster format *.asc) FARO (*.fls - *.fws) POLYWORKS (*.psl) E57 (*.E57 files) LandXML files (*.xml) DOT Products (*.dpl) RDBX	ASCII FILES (*.asc, *.csv...) Binary files (*.nsd) Leica Geosystems (*.pts, *.ptx, *lgs) E57 (*.e57) IGES (*.igs) LAS (*.las) LAZ (*.laz) Autodesk DXF (*.dxf)
Mesh	STL format (*.stl) Binary PBI format (*.pbi) DXF 3Dface format (*.dxf) Ascii POLY format (*.poly) OBJ format (*.obj) Ascii Leica format (*.msh) OFF files (*.off) PLY (*.ply) GLB format (*.glb, *gltf)	Ascii and binary STL format (*.stl) Binary PBI format (*.pbi) DXF 3Dface format (*.dxf) Ascii POLY format (*.poly) Vertices only (*.asc) DXF polyline (*.dxf) Ascii Leica format (*.msh) PLY (*.ply) LandXML (*.xml) OBJ format (*.obj) GLB format (*.glb) FBX format (*.fbx) IFC / IFCSite type (*.ifc, *.ifczip)

Contour / Section	IGES format DXF polyline format Binary MLI format (*.mli)	IGES format DXF polyline format Binary MLI format (*.mli) ASCII formats
CAD / BIM Models	IGES STEP DWG IFC RVT	IGES STEP DXF
Project	Cyclone 3DR (*.3dr) DXF - DWG XML Cyclone ModelSpace View (from IMP) JetStream Enterprise project	Cyclone 3DR (*.3dr) DXF PDF 3D SKETCHFAB
Report		PDF CSV BCF
Image	BMP JPEG JPG PNG	Ortho-image including georeferencing information as TXT file JPG JPEG BMP PNG TIF GIF

Cyclone 3DR provides “SendTo” features as well to import and export certain kinds of data with third-party products. More information is available in Cyclone 3DR documentation center (from the software help menu).

	Send From	Send To
Point Cloud	-	-
Mesh / Surfaces	AUTODESK AutoCAD HEXAGON MineSight 3D	AUTODESK AutoCAD HEXAGON MineSight 3D
Contour / Section / Points	AUTODESK AutoCAD HEXAGON MineSight 3D	AUTODESK AutoCAD HEXAGON MineSight 3D
CAD Model	AUTODESK AutoCAD	-
Image	-	AUTODESK AutoCAD (ortho-image)